

Candlelight Alleluia

for four-part mixed voices accompanied
with optional flute

Words and Music by
ANNA LAURA PAGE (ASCAP)

Dolce (♩ = 80)

$\overbrace{\quad\quad\quad}^3$
mp Unisono

Soprano
Alto

Tenore
Basso

Organo

Flute

Zvaig - zne mirdz spo - ži,

5

sve - ču gais-mā eng'-ļi dzied: "Al - le-lu - ja, al - le - lu, al -

9 *rit.* *a tempo* 12

-le - lu - ja!" *mp* Ma - ri - ja mai - gā

rit. *a tempo* 12

rit. *a tempo*

14

lie - gi šū - po Bēr-ni - ņu, redz To gu - ļam klu - si-ņām, ir

dzi - mis Die - va Dēls.

mp

Ie - miedz, Bēr - niņ ma - zais, _ dzie - diet Die - va

mp

27 *mf* *rit. poco a poco*

Dē - lam; Viņš pa - sau - les gais - ma tum - sā : mums dzi - mis Pes - tī -

mf *rit. poco a poco*

mf *rit. poco a poco*

31 *mp* *a tempo*

- tājs. *mp* *Unisono*

Zvaig - zne mirdz spo - ži, sve - ču gais - mā

mp *Unisono* *a tempo*

mp *a tempo*

mp *a tempo*

36

eng'-li dzied: "Al - le - lu - ja, al - le - lu al - le - lu -

mf *rit.*

mf *rit.*

mf *rit.*

40

mp *a tempo*

44

mp

- ja. Tu,

mp

mp *a tempo*

mp *a tempo*

44 *mp*

45

ma - zā, klu - sā Bet - lē - me, uz te - vi do - mas slīd. Redz

mf

mf

mf

49

šo - nakt vi - sa pa - sau - le: pār te - vi gais - ma spīd.

mp

mp

mp

mp

53

54

mf*Diskants (daži soprāni)*

Al - le - lu - ja, al - le - lu,

*Unisono (koris
un papildus balsis)*

Šai nak - tī Kris - tus pie - dzi - mis, to de - bess drau - dze sveic, kā

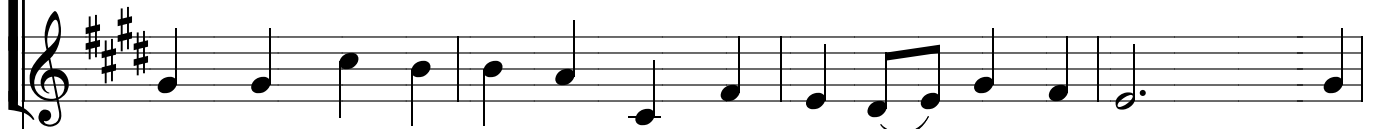
54

 Piano accompaniment for measures 53-54. It consists of three staves: treble, bass, and a lower treble. The treble staff has a dynamic marking of *mf*. The bass staff has a fermata over the first measure. The lower treble staff has a melodic line of quarter notes: D4, E4, F#4, G4, A4, B4, C5, B4, A4, G4, F#4, E4, D4.

58



al - le - lu - ja, al - le - lu - ja,



Bēr - niņš Viņš ir at - nā - cis pie tiem, kas Die - vu teic. Kaut

 Piano accompaniment for measures 58-61. It consists of three staves: treble, bass, and a lower treble. The treble staff has a dynamic marking of *mf*. The bass staff has a fermata over the first measure. The lower treble staff has a melodic line of quarter notes: D4, E4, F#4, G4, A4, B4, C5, B4, A4, G4, F#4, E4, D4.

62

al - le - lu - ja, al - le - lu,

nakts vēl lie - kas ga - ra, aiz tum - sas die - na aust: Dievs

66

al - le - lu - ja, al - le - lu - ja!

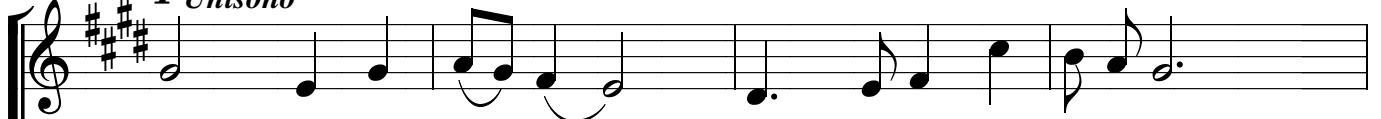
vi - sus mūs ir mī - lē - jis, ej Vi-ņa sla - vu paust!

mf

(tikai koris)

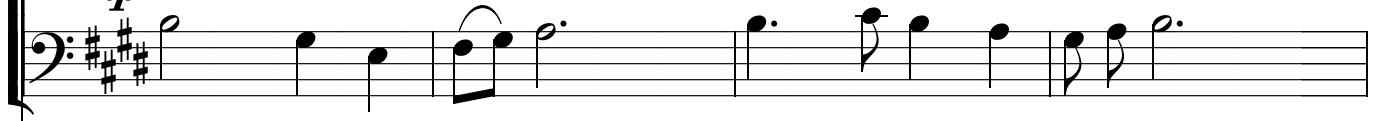
71

mp Unisono



Zvaig - zne mirdz spo - ži _____, sve - ču gais- mā eņģ-ļi dzied:

mp Unisono



Piano accompaniment for measures 71-74. It features a grand staff with treble and bass clefs. The right hand has a melodic line with eighth notes, and the left hand has a bass line with eighth notes. The dynamic marking *mp* is present in both staves.

75

Vocal line for measure 75, starting with a treble clef and a key signature of three sharps. The melody consists of quarter and eighth notes.

Jaun - dzi-mu - šais Ka- ra- lis nes mie - ra vēs - ti pa-sau-lei; mēs

Piano accompaniment for measures 75-78. It features a grand staff with treble and bass clefs. The right hand has a melodic line with quarter notes, and the left hand has a bass line with quarter notes. The dynamic marking *mp* is present in both staves.

79

cresc.

mf

mp

pie - lū-dzam To, Viņš ir gais-ma, miers virs ze-mes. Al - le-

mf

mp

cresc.

cresc.

mf

mp

mf

mp

84

rit. poco a poco

p

lu - ja, al - le - lu - ja

p

rit. poco a poco

rit. poco a poco

p

pp

rit. poco a poco

p

pp